

SCAUT-Recorder

siemens-energy.com

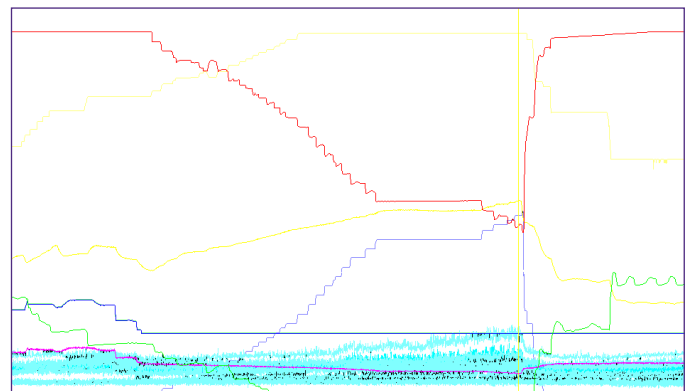
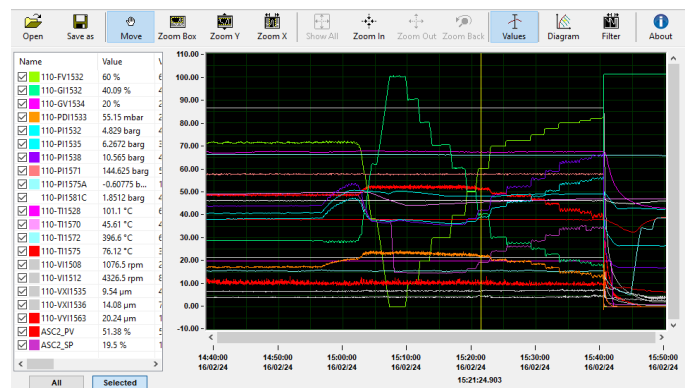
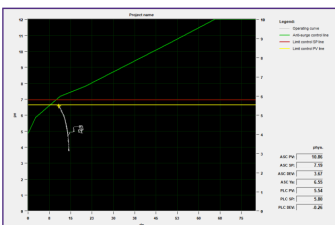


SCAUT-Recorder – Maximizing reliability and minimizing downtime - your key to efficient compressor operation

In the world of compressor control systems, reliability and minimal downtime are paramount. When issues arise, it is crucial to act swiftly to keep the machine running, respond quickly to potential problems, and ensure a safe restart in the event of a shutdown. Understanding the root cause of these issues is essential, and having high-quality information at your fingertips is the key to effective problem analysis and resolution. This is where our in-house trending and data analysis tool, the SCAUT-Recorder, comes into play.

Tailored data analysis for your processes

The SCAUT-Recorder offers a range of benefits specifically designed to enhance the reliability and efficiency of your compressor control systems:



Compact and efficient design

- **Slim design:** Lightweight and efficient, with a small footprint.
- **High resolution:** Provides detailed data with resolutions ranging from 0.05 to 0.4 seconds, depending on data volume.

User-friendly operation

- **Ease of use:** Both the recorder and analyser are designed for quick and easy operation.
- **Rapid data processing:** Fast preparation and analysis of data tailored directly to your compressor systems.

Enhanced troubleshooting and maintenance

- **Quick response to issues:** Enables rapid action to keep machines running and respond to potential problems.
- **Detailed problem analysis:** High-quality information allows for better understanding and analysis of issues, leading to more effective solutions.

Simplified integration and security

- **No complex network integration:** Eliminates the need for extensive network integration and associated cybersecurity efforts, as it operates independently.

Optimized performance and reliability

- **Minimize downtime:** By providing precise and accurate data, the SCAUT-Recorder helps minimize machine downtime and ensures reliable operation.

Future-proofing with AI integration

- **AI training capabilities:** In combination with valuable process trends, AI can be trained to provide recommendations to operators and plant managers, or to control regulators, valves, etc. (future prospects).

With the SCAUT-Recorder you gain a powerful tool to enhance the reliability and efficiency of your compressor control systems. Leverage the benefits of precise data analysis and trending to keep your machines running smoothly and minimize downtime.

Published by
Siemens Energy Global GmbH & Co. KG
Transformation of Industry
Siemenspromenade 9
91058 Erlangen
Germany

Published by
Siemens Energy, Inc.
Transformation of Industry
4400 N Alafaya Trail
Orlando, FL 32826
USA

© Siemens Energy, 2025
Siemens Energy is a trademark licensed by
Siemens AG.

Subject to changes and errors. The information given in this document only contains general descriptions and/or performance features which may not always specifically reflect those described, or which may undergo modification in the course of further development of the products. The requested performance features are binding only when they are expressly agreed upon in the concluded contract. All product designations may be trademarks or product names of Siemens Energy Global GmbH & CO. KG or other companies whose use by third parties for their own purposes could violate the rights of the owners.