

Tapered pin crosshead

Solving a persistent maintenance
challenge

siemens-energy.com



In reciprocating compressors, the original tapered crosshead pin design presents a recurring maintenance issue. Over time, the pin can seize within the bore, making removal difficult and often leading to damage of both the pin and bore. This not only increases labor time and cost but also introduces unpredictability into scheduled maintenance windows.

Key challenges:

- Crosshead pin sticking in bore during service
- Risk of damage during removal once seized
- Reassembly often requires precision refinishing of pin and bore

These issues can lead to extended downtime, increased labor costs, and potential damage to critical components—impacting operational efficiency and reliability.

A smarter, more maintainable solution

Siemens Energy offers a modernized approach: replacing the tapered pin and bore with a **floating crosshead pin** design. This solution introduces clearance between the pin and bore, eliminating the tight taper fit and the associated service challenges.

Flexible implementation options:

- Re-machining of existing customer components
- Supply of new crosshead assemblies
- Customizable solutions tailored to specific compressor models and operating conditions

This upgrade is designed to integrate seamlessly into your existing maintenance strategy, reducing complexity and improving serviceability. No changes to connecting rod or other components required. No changes to lubrication system required.

Benefits and differentiators

Why choose Siemens Energy's Floating Crosshead Pin solution?

Our redesigned crosshead pin system delivers measurable improvements in maintainability and service efficiency.

Key benefits:

- **Predictable maintenance time**
Eliminate the uncertainty of pin removal and reduce risk of delays during scheduled service.
- **Reduced labor requirements**
Simplified removal and replacement process saves time and effort, lowering overall maintenance costs.
- **Damage prevention**
Avoid costly repairs to pin bores and pins caused by seizure and forced removal.
- **Custom engineering support**
Siemens Energy works with you to tailor the solution to your compressor fleet, ensuring optimal performance and compatibility.

Promoting long-term maintainability

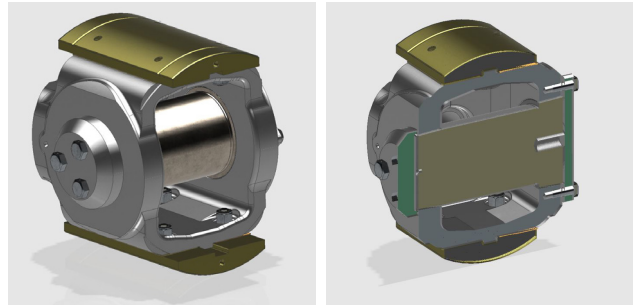
This labor-saving modification is more than a fix—it’s a strategic upgrade that enhances the maintainability of your compressor systems. With Siemens Energy’s engineering expertise and flexible implementation options, you gain a reliable partner in improving uptime and reducing lifecycle costs.

This upgrade can be applied to the following legacy models:

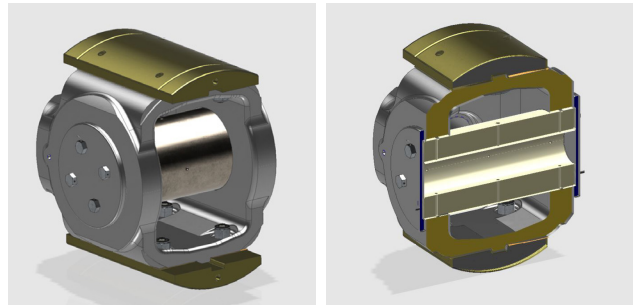
- HHE H-15 (1963-1999)
- HHE-VG (1963-1999)
- HHE J-15 (1971-1998)
- HHE-VK (1971-1998)
- CRA (1945-1979)
- Others upon request

Let’s talk about how we can help modernize your compressor maintenance.

Original Tapered Pin Crosshead



New Floating Pin Crosshead



Published by
Siemens Energy Global GmbH & Co. KG
Transformation of Industry
Siemenspromenade 9
91058 Erlangen
Germany

Published by
Siemens Energy, Inc.
Transformation of Industry
4400 N Alafaya Trail
Orlando, FL 32826
USA

© Siemens Energy, 2025
Siemens Energy is a trademark licensed by Siemens AG.

Subject to changes and errors. The information given in this document only contains general descriptions and/or performance features which may not always specifically reflect those described, or which may undergo modification in the course of further development of the products. The requested performance features are binding only when they are expressly agreed upon in the concluded contract. All product designations may be trademarks or product names of Siemens Energy Global GmbH & CO. KG or other companies whose use by third parties for their own purposes could violate the rights of the owners.