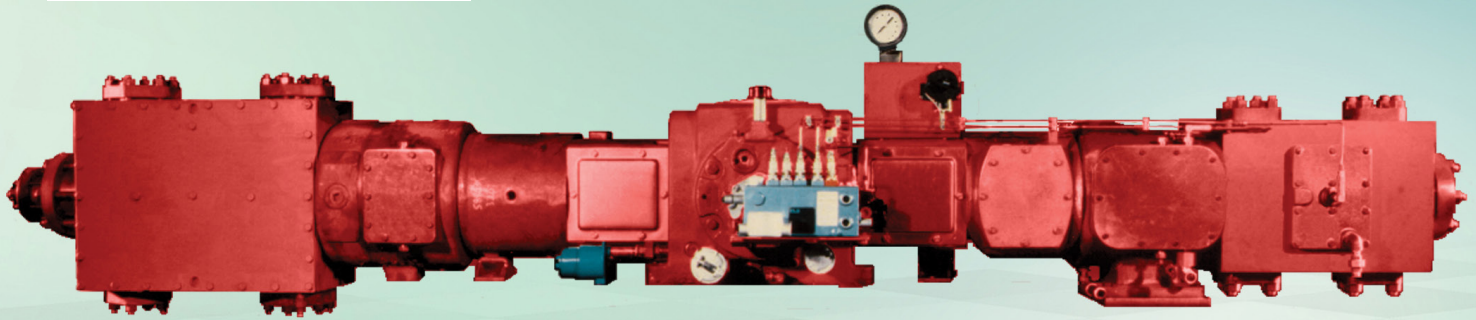


SIEMENS

Ingenuity for life



Dresser-Rand PHE

Reciprocating Process Compressor

siemens.com/ recip

The Dresser-Rand PHE reciprocating process compressor provides an economical solution where full-time, medium volume service is a requirement. Its proven performance, balanced design, and wide range of cylinder selections make the PHE an excellent choice for a variety of applications.

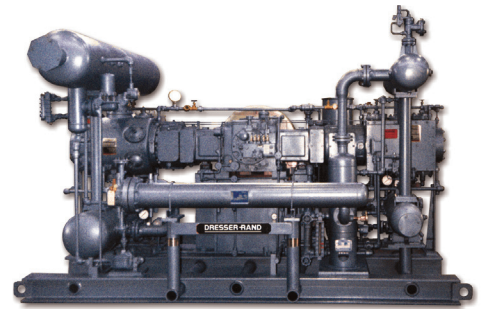
Versatility and Performance

The PHE is a horizontally opposed, two-throw, reciprocating compressor designed for long-term, process gas service. Designed to API-618 specifications. It can handle a variety of drivers with either direct or V-belt connections and can be fitted with either lubricated or non-lubricated cylinders ranging from 1.625 to 19 inches (41 to 483 mm) in bore diameter.

Like all Dresser-Rand business reciprocating process compressors, the PHE is engineered to our high standards, ensuring long-lasting reliability. It offers a versatile alternative to larger, more costly compressors, providing an economic solution for requirements that demand full-time performance in lower volume service.

Designed and Built With Precision

With its fine-grain, cast iron frame, the PHE is engineered to provide maximum support for the running gear and related components. The rigid frame design and balanced crankshaft minimize vibration and provide for low moments and minimal



foundation requirements. Forged from high tensile strength alloy steel, the crankshaft is fully stress relieved and heat-treated. The bearing journals and crankpin are precision ground and polished to exacting tolerances.

Rugged, precision-machined aluminum main and crankpin bearings are generously sized for best run-in and long-lasting service. All bearings are force-lubricated per API-618 specifications. Connecting rods are die-forged steel with rifle-drilled passages for positive lubrication of the crosshead pin and bushing. A shoe-less aluminum crosshead is standard and requires no adjustment.

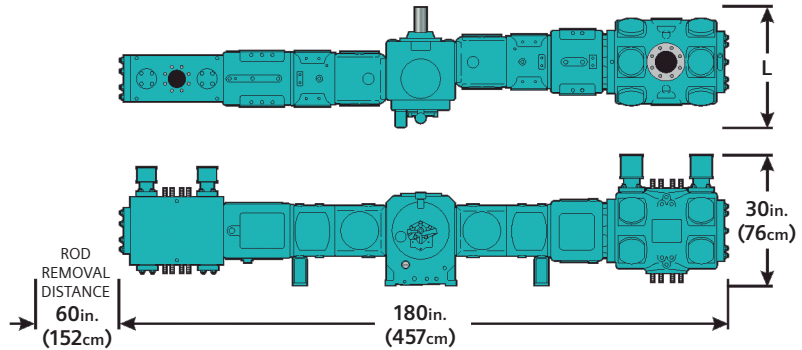
Outstanding Cylinder Design and Selection

With experience in a wide variety of services, our cylinders provide outstanding service and reliability. Our engineering expertise ensures that each cylinder provides maximum performance and reliability with minimum maintenance cost. Cylinder materials include cast iron, nodular iron, cast steel, fabricated carbon or stainless steel, and forged steel. Most cylinders are available for either lubricated or non-lubricated service.

Dimensions

For API-type distance pieces add 18 inches (457 mm) to the width dimension and 9 inches (229 mm) to the rod removal distance.

| Specifications | |
|---------------------|-------------------------------------|
| Maximum HP | 240 (179kW) |
| Standard strokes | 7 inch (178 mm) |
| Number of throws | 2 |
| Cylinder bore range | 1.625 to 19.0 inches (41 to 483 mm) |



Published by
Siemens Oil and Gas. 2019

Reciprocating Compressor Engineering
Center of Excellence
100 Chemung Street
Painted Post, NY 14870 USA
Tel: (Int'l +1) 607-937-2011
Fax: (Int'l +1) 607-937-2905

Siemens Energy, Inc.
Houston, TX 77079 USA
Tel: (Int'l +1) 281-509-8000

For more information, please contact
our Customer Support Center.
Phone: +49 180 524 70 00
Fax: +49 180 524 24 71
(Charges depending on provider)
E-mail: support.energy@siemens.com

Article-No. GPOG-B10009-00-7600

Subject to changes and errors. The information given in this document only contains general descriptions and/or performance features which may not always specifically reflect those described, or which may undergo modification in the course of further development of the products. The requested performance features are binding only when they are expressly agreed upon in the concluded contract.