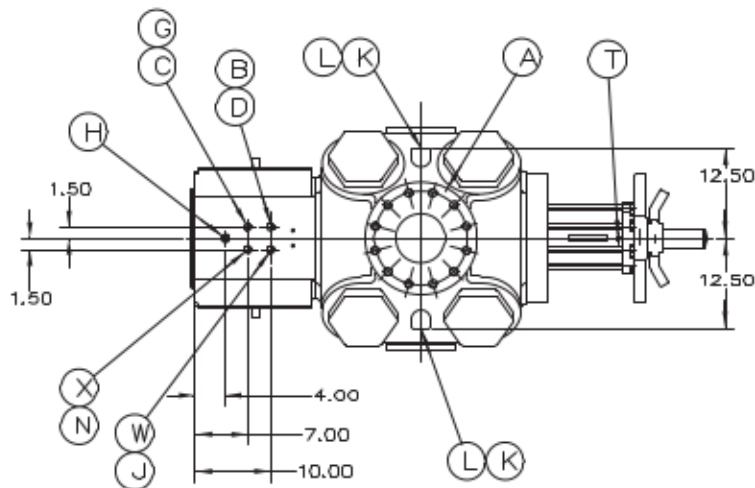
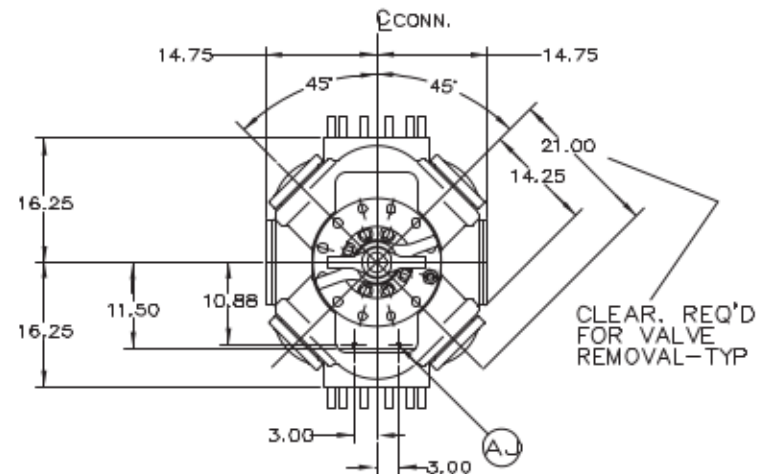
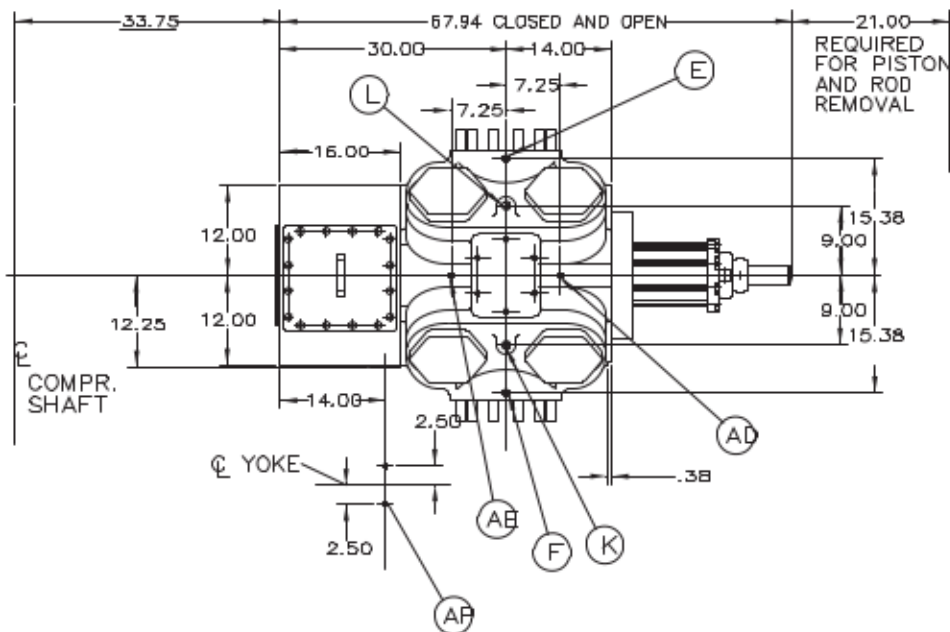


REVISIONS				
ZONE	REV	DESCRIPTION	DATE	APPROVED



- A) 6.00-900# FF FLANGE CONN: INLET-TOP & DISCH-BOTTOM  
12X 1.125-8UN-3A STUDS ON  $\varnothing$ 2.500 B.C.,  $\varnothing$ 5.00 FLANGE
- B) .25 NPT -- PACKING LUBE CONN ----- TOP
- C) .25 NPT -- PACKING VENT/DRAIN CONN ----- BOTTOM
- D) .75 NPT -- YOKE DRAIN CONN ----- BOTTOM
- E) .25 NPT -- CYL BORE LUBE CONN ----- TOP
- F) .25 NPT -- CYL BORE LUBE CONN ----- BOTTOM
- G) .75 NPT -- YOKE VENT CONN.(IF REQUIRED) ----- TOP
- H) .38 NPT -- PACKING COOLANT OUT CONN.(IF REQUIRED) ----- TOP
- J) .38 NPT -- PACKING COOLANT IN CONN.(IF REQUIRED) ----- BOTTOM
- K) .75 NPT -- CYL COOLANT INLET CONN.(IF REQUIRED) ----- BOTTOM
- L) .75 NPT -- CYL COOLANT DISCH CONN.(IF REQUIRED) ----- TOP
- N) .75 NPT -- YOKE PURGE CONN. (IF REQUIRED) ----- BOTTOM
- T) .125 NPT -- GREASE FITTING ----- TOP
- W) .25 NPT -- SCRAPER PURGE CONN (IF REQUIRED) ----- TOP
- X) .25 NPT -- PACKING PURGE CONN (IF REQUIRED) ----- TOP
- AD) .50 NPT -- OUTER END INDICATOR CONN ----- BOTH SIDES
- AE) .50 NPT -- FRAME END INDICATOR CONN ----- BOTH SIDES
- AJ) .750-10UNC-3B THD, CYLINDER SUPPORT ----- BOTTOM END
- AP) .625-11UNC-3B THD, YOKE SUPPORT ----- BOTTOM



TOTAL WEIGHT: APPROX. 3025 LBS.

CHG TO: 124 149				
		SIZE	STROKE	TYPE
DRAWN D.M. GEORGE		10.50	6.00/7.00	HOSS
DATE 11/29/08		NAME OF PART CYLINDER OUTLINE		
CHECKED T. BLAZEJEWSK		DATE 12/13/08	SIZE C	FEDERAL SUPPLY CODE HIH01071
APPROVED G.F. BISEL		DATE 12/19/08	DRAWING NO. HIH01071	REV. -
UNLESS OTHERWISE SPECIFIED, ALL DIMENSIONS ARE IN INCHES				
SCALE 1:12			WT.ABOVE	SHEET 1 OF 1

DWG NO. HIH01071

SH 1