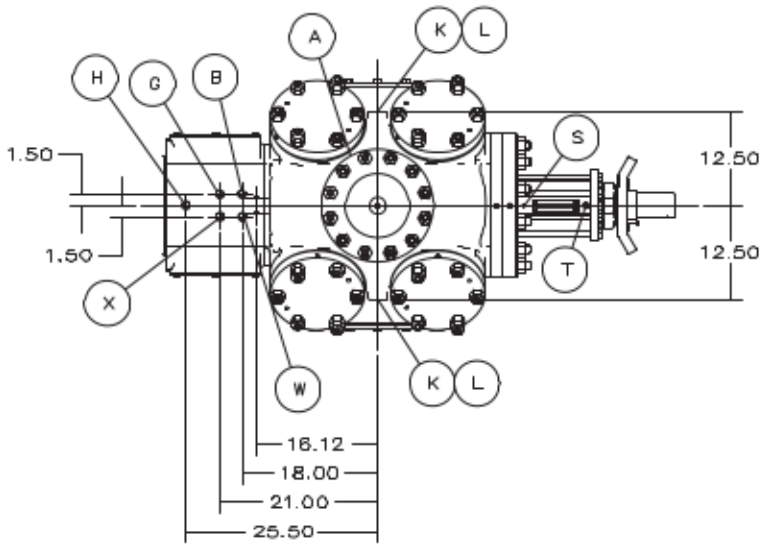
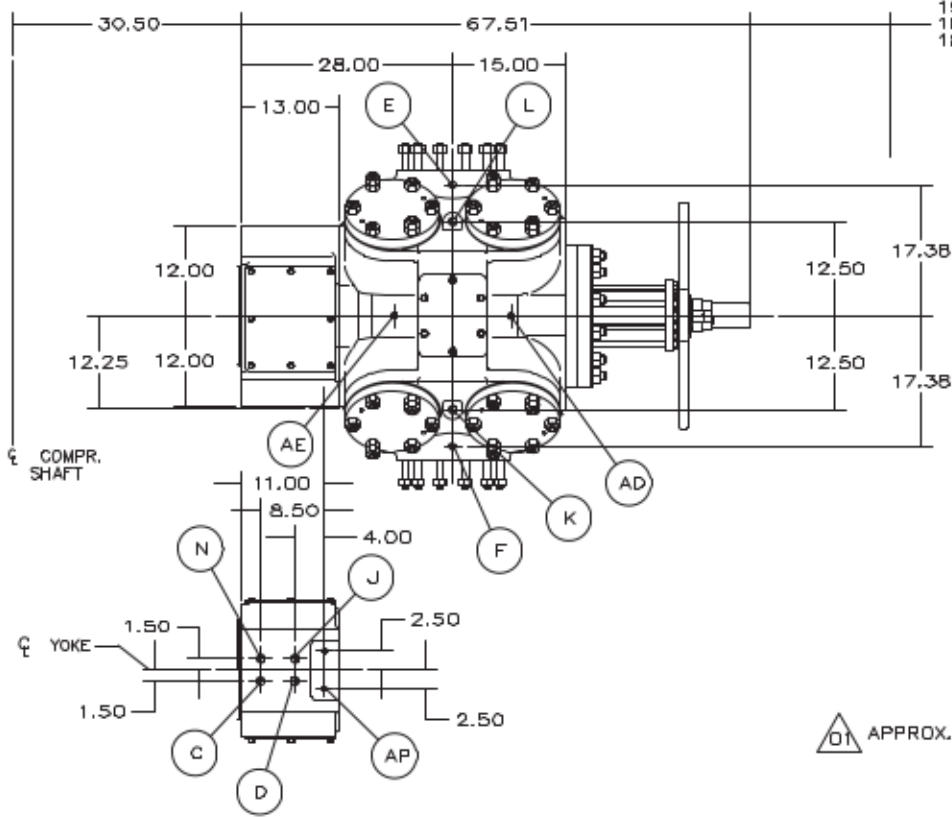


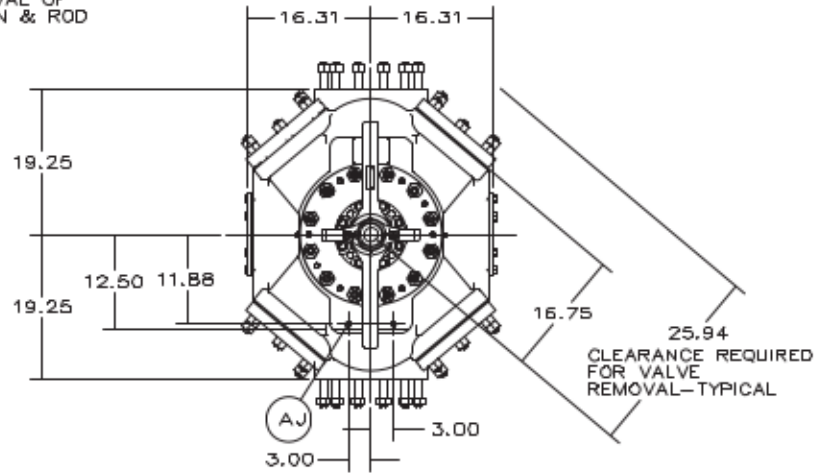
| REVISIONS | | | | |
|-----------|-----|-------------------------------|---------|----------|
| ZONE | REV | DESCRIPTION | DATE | APPROVED |
| | 01 | ADDED NOTE FOR APPROX. WEIGHT | 30JUL08 | KMD/BJN |



- A) 8.00-400# FF FLANGE CONN-INLET TOP & DISCH. BOTTOM
- 12-1.000-8UNC-3A STUDS ON 13.000 DIA B.C. 15.00 FLANGE DIA
- B) .25 NPT --- PACKING LUBE CONN ----- TOP
- C) .25 NPT --- PACKING VENT/ DRAIN CONN ----- BOTTOM
- D) .75 NPT --- YOKE DRAIN CONN ----- TOP
- E) .25 NPT --- CYL BORE LUBE CONN ----- TOP
- F) .25 NPT --- CYL BORE LUBE CONN ----- BOTTOM
- G) .75 NPT --- YOKE VENT/PURGE CONN ----- TOP
- H) .38 NPT --- PACKING COOLANT OUT CONN ----- TOP
- J) .38 NPT --- PACKING COOLANT IN CONN ----- BOTTOM
- K) .75 NPT --- CYL COOLANT INLET CONN ----- BOTTOM
- L) .75 NPT --- CYL COOLANT DISCH CONN ----- TOP
- N) .75 NPT --- SPARE CONN ----- BOTTOM
- S) .12 NPT --- VVCP ROD PKG VENT TO NON-HAZ AREA ----- TOP
- T) .12 NPT --- GREASE FITTING ----- TOP
- W) .25 NPT --- SCRAPER PURGE CONN (IF REQUIRED) ----- TOP
- X) .25 NPT --- PACKING PURGE CONN (IF REQUIRED) ----- TOP
- AD) .50 NPT --- OUTER END INDICATOR CONN ----- SIDE
- AE) .50 NPT --- FRAME END INDICATOR CONN ----- SIDE
- AJ) .750-10UNC-3B THD CYLINDER SUPPORT ----- BOTTOM
- AP) .625-11UNC-3B YOKE SUPPORT ----- BOTTOM



19.18 (5.0" STR)
 18.66 (6.0" STR)
 18.16 (7.0" STR)
 REQUIRED FOR
 REMOVAL OF
 PISTON & ROD



△ APPROX. WEIGHT = 3550 LBS

| | | | | |
|------------------------|-----------------|---------------------------------|------------------------|---------------------|
| CHG TO: 80 149 | | | | |
| THIRD ANGLE PROJECTION | | SIZE | STROKE | TYPE |
| DRAWN K.DAVISON | | 14.00/15.00NI | ALL | HOS |
| CHECKED B.NIESSING | | NAME OF PART | | |
| APPROVED B.NIESSING | | OUTLINE - 14.00 CYL/13" DP/VVCP | | |
| DATE 28MAR08 | DATE 28MAR08 | SIZE C | FEDERAL SUPPLY CODE | DWG NO. HIH01402 |
| DATE 28MAR08 | DATE 28MAR08 | WT. | REV. 01 | |
| SCALE 1:12 | | SHEET 1 OF 1 | | |

DWG NO. HIH01402 SH 1

28-MAR-08 11:41 AM