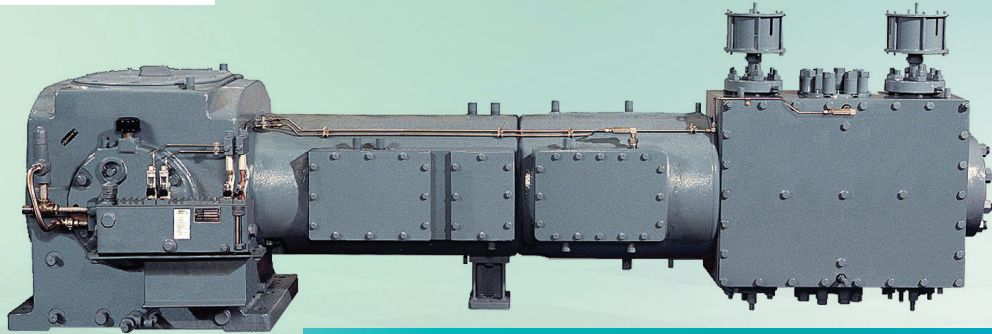


SIEMENS

Ingenuity for life



Dresser-Rand 11-ESH Reciprocating Process Compressor

siemens.com/reciprocating-compressors

The Siemens ESH reciprocating process compressor provides an economical solution where limited space and continuous, low-volume service is a requirement. Its proven performance, versatile design, and wide range of cylinder selections make the ESH an obvious choice for a variety of applications.

Versatility and Performance

Our 11-inch (279 mm) stroke ESH single-throw, reciprocating compressor is designed for long-term, process gas service. Built in accordance with API-618 specifications.

Whether direct-connected or belt-driven, the ESH can handle a variety of drivers up to 200 hp (149 kW) and can be fitted with either lubricated or non-lubricated cylinders from 2.125 to 28 inches (54 to 711 mm) in bore diameter. The ESH is also available in a vertical arrangement that greatly reduces the foundation size and area. In its vertical configuration, the "ESV" provides significant advantage where space may be limited.

Designed and Built with Precision

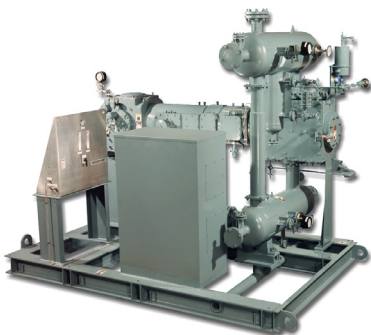
With its fine-grain, cast iron frame, the ESH is engineered to provide the required support for the running gear and related components. The rigid frame design and counterweighted crankshaft minimize vibration and provide for low moments and minimal foundation requirements. Forged from high tensile strength alloy steel, the crankshaft is fully stress relieved and heat-treated. The bearing journals and crankpin

are ground with precision and polished to meet exacting tolerances.

Rugged, precision-machined aluminum main and crankpin bearings are generously sized for best run-in and long-lasting service. All bearings are force-lubricated per API-618 specifications. Connecting rods are die-forged steel with rifle-drilled passages for positive lubrication of the crosshead pin and bushing. The standard crossheads are nodular iron, equipped with adjustable aluminum shoes at the top and bottom. Cast steel crossheads are also available.

Outstanding Cylinder Design and Selection

With experience in virtually every type of service, our cylinders provide outstanding service and reliability. Our engineering expertise ensures that each cylinder provides maximum performance and reliability with minimum maintenance cost. Cylinder materials include cast iron, nodular iron, cast steel, fabricated carbon or stainless steel, and forged steel. Most cylinders are available for either lubricated or non-lubricated service.



Experience That Counts

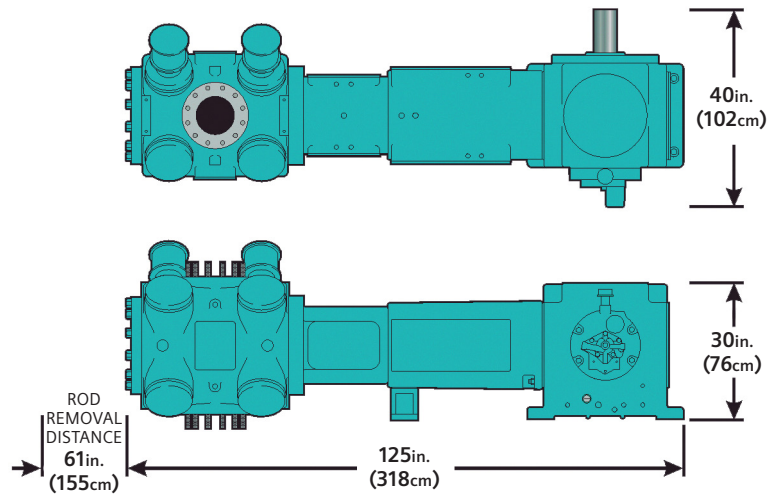
The ESH compressor is world renowned for its dependable service and steadfast reliability in a wide variety of process applications. With more than 1,300 units shipped for use in various applications around the world, the ESH process compressor is an excellent choice where low volume requirements demand reliable operation.

Dimensions

Dimensions provided are typical, and are basis API Type B distance pieces. For API Types C & D distance pieces, add 9 inches (23 cm) to both the width dimension, and the rod removal distance.

Specifications

Maximum HP	200 (149 kW)
Standard strokes	11 inch (279 mm), 9 inch (229 mm)
Number of throws	1
Cylinder bore range	2.125 to 28 inches (54 to 711 mm)



Note: For the ESV, the height becomes 125 inches (318cm) and the width becomes 33 inches (84cm).

11-ESH Typical Dimension - Inches (Centimeters)

Model	R	W	H	L
ESH	61 (155)	125 (318)	30 (76)	40 (102)
ESV	61 (155)	33 (84)	125 (318)	40 (102)

Published by
Siemens Gas and Power. 2019

Reciprocating Compressor Engineering
Center of Excellence
100 Chemung Street
Painted Post, NY 14870 USA
Tel: (Int'l +1) 607-937-2011
Fax: (Int'l +1) 607-937-2905

Siemens Energy, Inc.
Houston, TX 77079 USA
Tel: (Int'l +1) 281-509-8000

For more information, please contact
our Customer Support Center.
Phone: +49 180 524 70 00
Fax: +49 180 524 24 71
(Charges depending on provider)
E-mail: support.energy@siemens.com

Article-No. GPOG-B10004-00-7600

Subject to changes and errors. The information given in this document only contains general descriptions and/or performance features which may not always specifically reflect those described, or which may undergo modification in the course of further development of the products. The requested performance features are binding only when they are expressly agreed upon in the concluded contract.