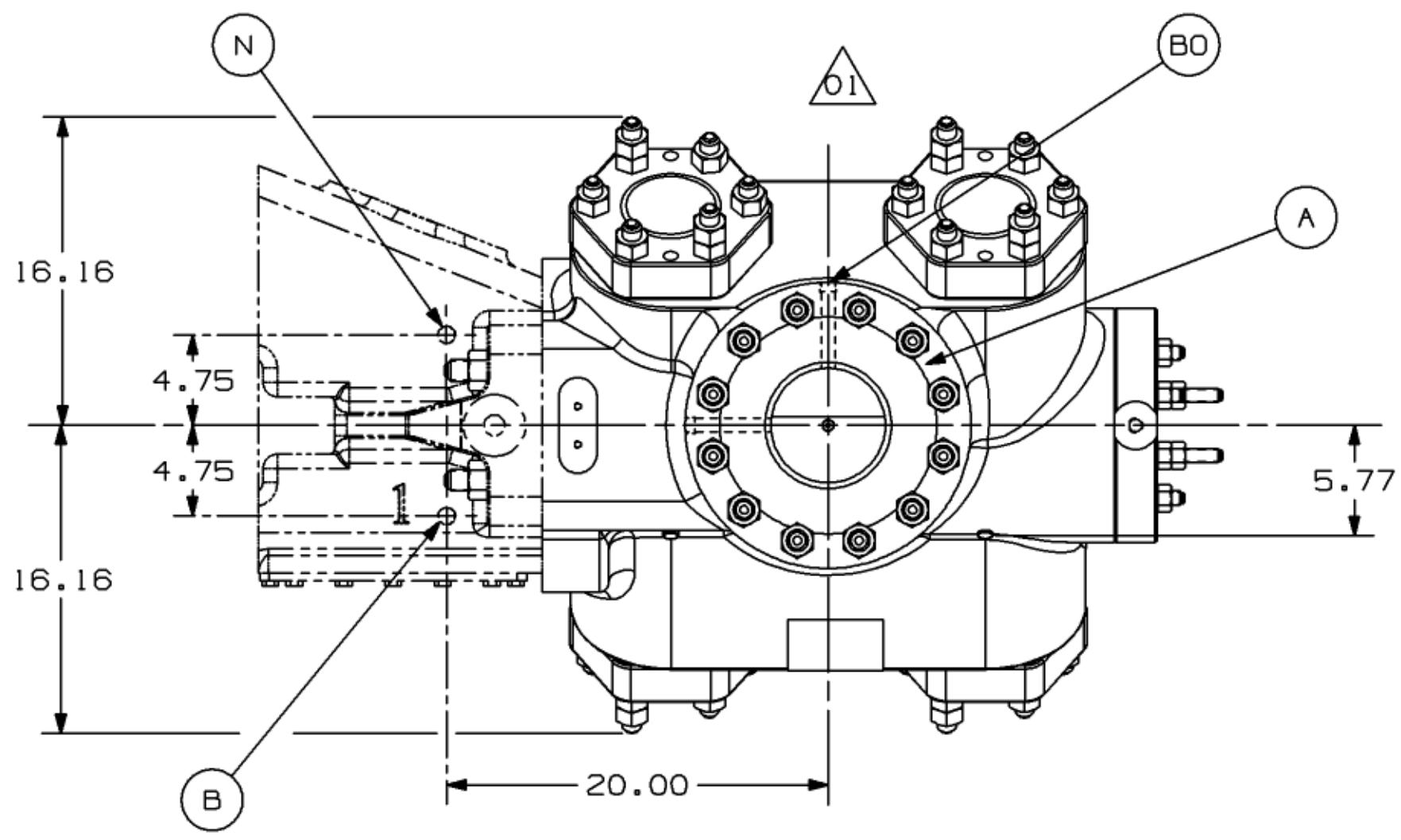
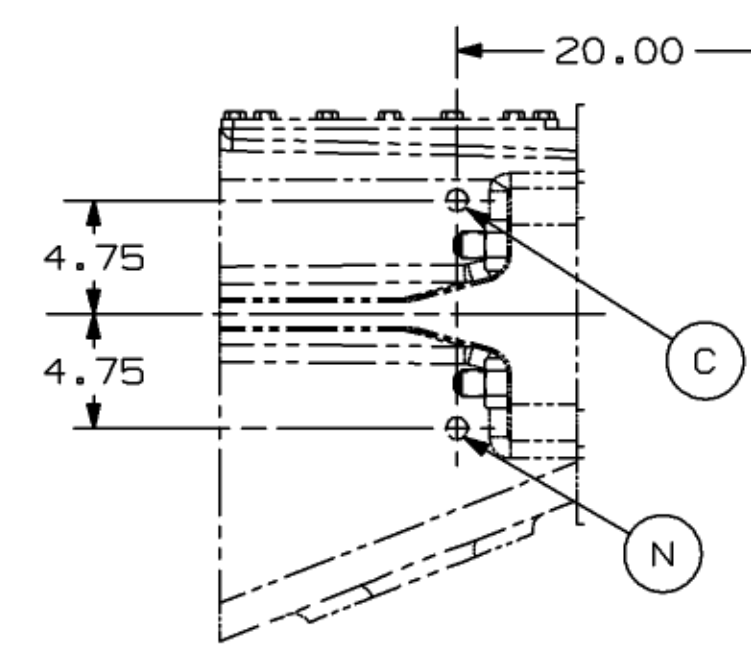
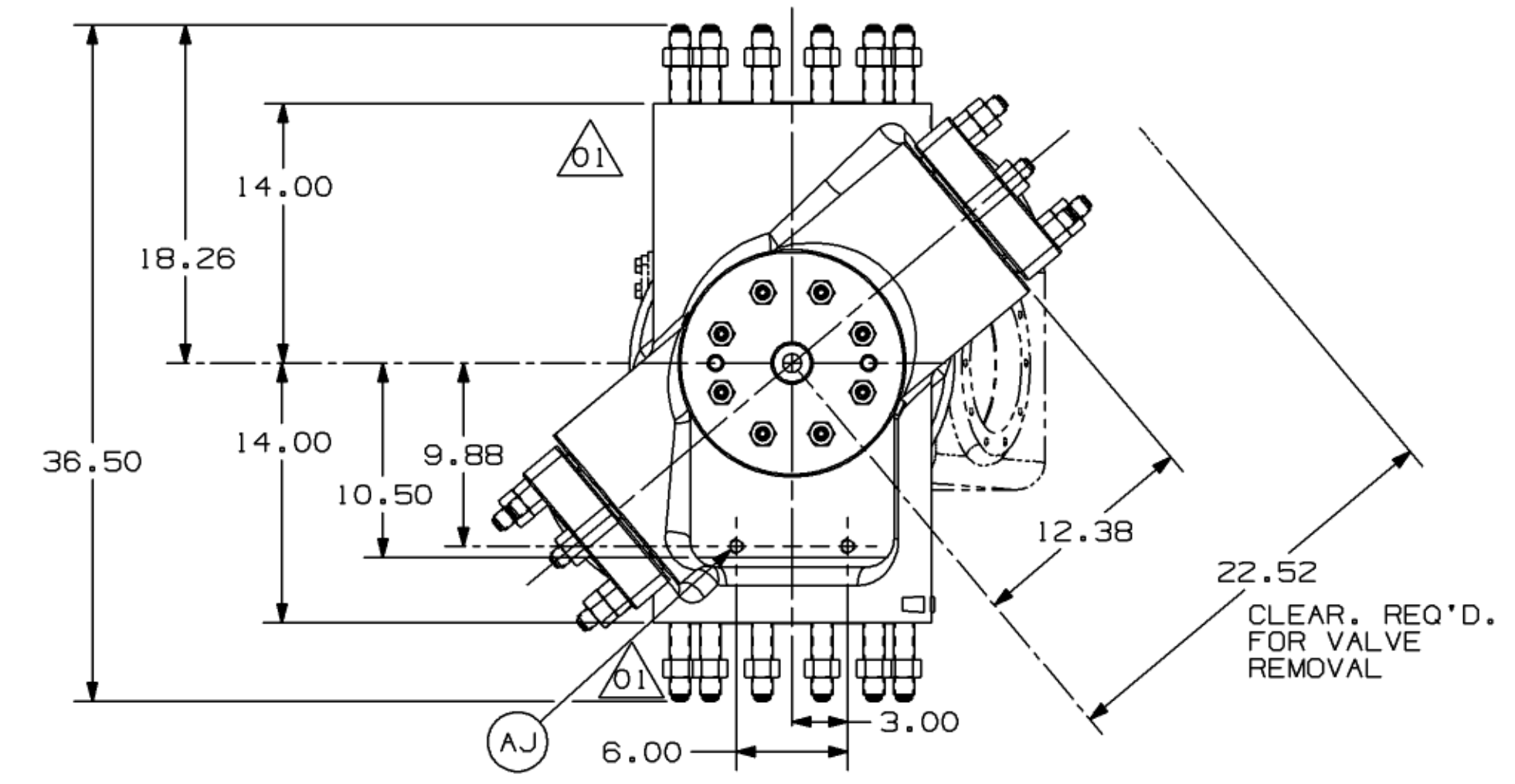
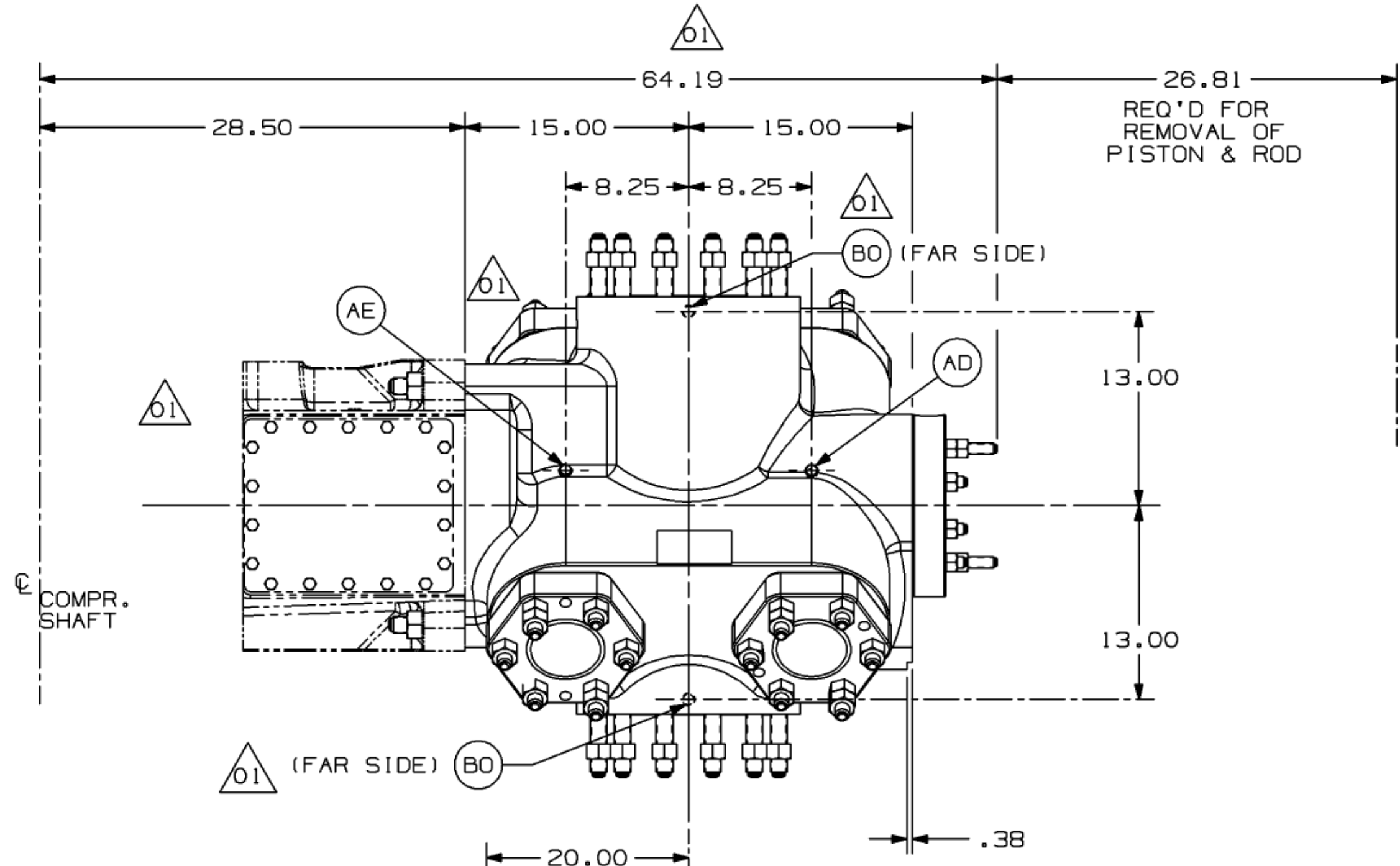
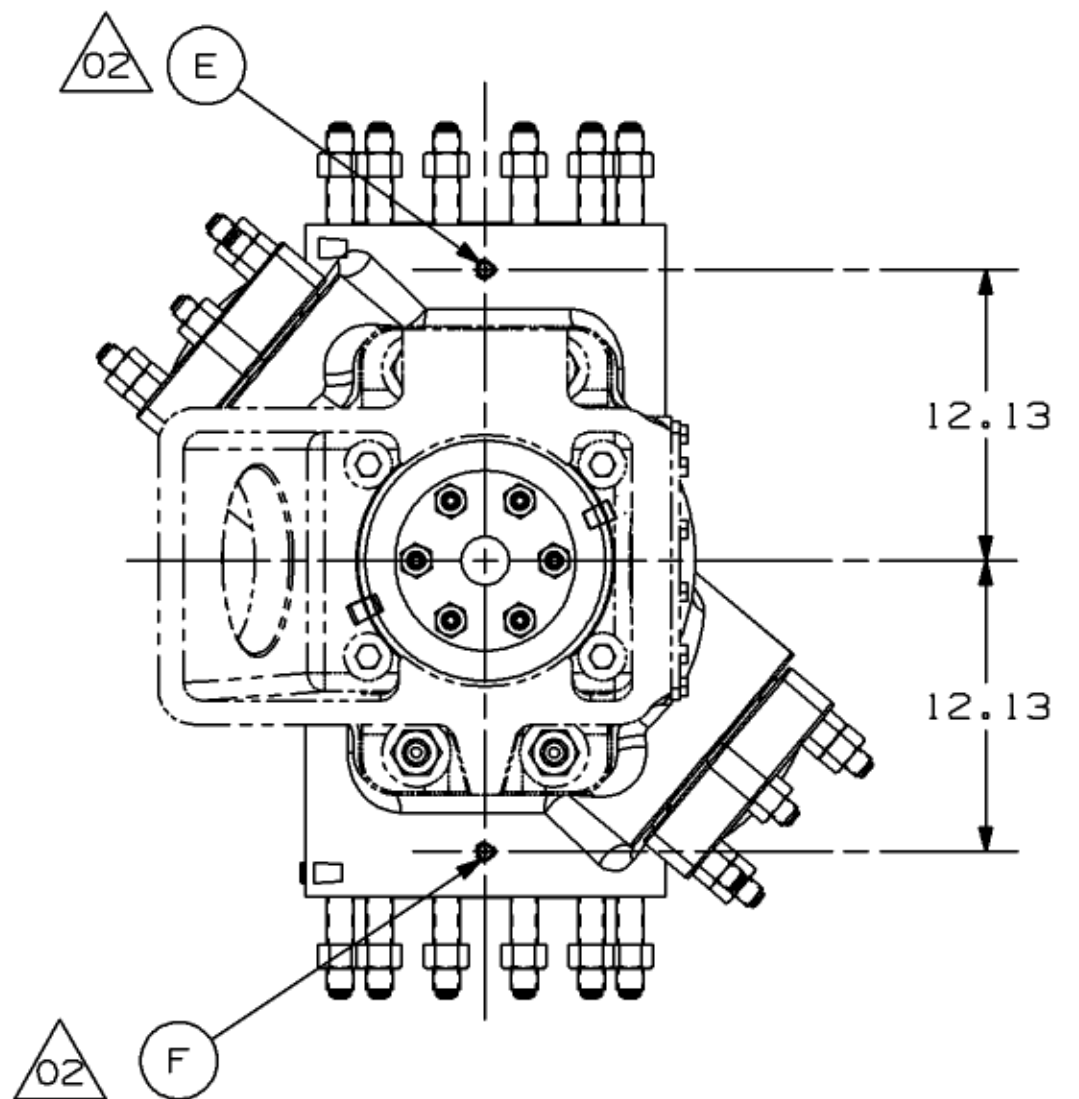


DWG NO. HB100650		SH 1		
REVISIONS				
ZONE	REV	DESCRIPTION	DATE	APPROVED
	01	NOTES UPDATED; 24-1.125-8UN-3A THD WAS 24-1.125-8UN THD; .750-10UNC-3B WAS .500-13UNC-2B; .50 NPT WAS .75 NPT; CHG NO. 72, 124, 149 WAS 80, 149; BOTH SIDES WAS SIDES; "BO" WAS "BB"; REMOVED DIM 13.00, 30.00 & 17.08; ADDED DIM 15.00 & 64.19; WEIGHT ADDED FOR 4.75", 5.75", 6.00" ASSLY; WEIGHT CHANGED FROM 2424 LBS TO 2474 LBS FOR 6.50" ASSLY; 10.25 WAS 11.25; 4.75 WAS 3.56; ECN-PPT122118; S.GURLKAR	26NOV12	J.SPRINGER
	02	LEFT HAND SIDE VIEW ADDED; LUBE CONNECTION HOLES ROTATED 90° ON FLANGE; ECN-PPT151529; V.MESHARAM.	24JUL15	B.BENNITT

SIZE	TOTAL APPROX. WEIGHT (LBS)
4.75"	2418
5.75"	2405
6.00"	2472
6.50"	2474



- △ 01 A) 6.00-900# FF FLANGE CONN-INLET TOP & DISCH. BOTTOM
- △ 01 B) 24-1.125-8UN-3A THD STUDS ON 12.500 DIA B.C. 15.00 FLANGE DIA
- △ 01 C) .25 NPT -- PACKING LUBE CONN ----- TOP
- △ 01 D) .25 NPT -- PACKING VENT/DRAIN CONN ----- BOTTOM
- △ 01 E) .25 NPT -- CYL BORE LUBE CONN ----- TOP
- △ 01 F) .25 NPT -- CYL BORE LUBE CONN ----- BOTTOM
- △ 01 N) .75 NPT -- SPARE PURGE CONN. ----- TOP & BOT
- △ 01 AD) .50 NPT -- OUTER END INDICATOR CONN ----- BOTH SIDES
- △ 01 AE) .50 NPT -- FRAME END INDICATOR CONN ----- BOTH SIDES
- △ 01 AJ) .750-10UNC-3B THD, CYLINDER SUPPORT ----- BOTTOM SIDE
- △ 01 BO) .50 NPT -- CYL RTD (MAX. INSERTION DEPTH-10.25") -- TOP & BOT (MIN. INSERTION DEPTH-4.75")



THIS DRAWING CONTAINS CONFIDENTIAL AND TRADE SECRET INFORMATION, IS THE PROPERTY OF DRESSER-RAND COMPANY, AND IS PROVIDED TO THE RECEIVER IN CONFIDENCE. THE RECEIVER BY RECEPTION AND RETENTION OF THE DRAWING ACCEPTS THE DRAWING IN CONFIDENCE AND AGREES THAT, EXCEPT AS AUTHORIZED IN WRITING BY DRESSER-RAND COMPANY, IT WILL (1) NOT USE THE DRAWING OR ANY COPY THEREOF OR THE CONFIDENTIAL OR TRADE SECRET INFORMATION THEREIN; (2) NOT COPY THE DRAWING; (3) NOT DISCLOSE TO OTHERS EITHER THE DRAWING OR THE CONFIDENTIAL OR TRADE SECRET INFORMATION THEREIN; AND (4) UPON COMPLETION OF THE NEED TO RETAIN THE DRAWING, OR UPON DEMAND, RETURN THE DRAWING AND ALL COPIES THEREOF IN ANY FORM.

NOTE: THIS DRAWING CONFORMS TO ANSI STD Y14.5M-1982 UNLESS OTHERWISE SPECIFIED, ALL DIMENSIONS ARE IN INCHES				PATTERN NO.	
UNSPECIFIED TOLERANCES				MATERIAL	
CASTING		MACHINING		GEOMETRIC SYMBOLS	
DIMENSION	TOLERANCE	DIMENSION	TOLERANCE	○	CYLINDRICITY
UNDER 2"	+.062"-.062"	2 PL	3 PL	□	FLATNESS
2" TO 5"	+.093"-.062"	UNDER 24"	±030"	⊥	PERPENDICULARITY
5" TO 8"	+.125"-.093"	24" AND UP	±030"	//	PARALLELISM
8" TO 12"	+.187"-.125"	ANGLES	±030'	◎	CONCENTRICITY
12" TO 15"	+.250"-.187"	UNSPECIFIED FILLETS AND RADII TO BE .125		⊕	POSITION
15" AND UP	+.250"-.250"			↻	CIRCULAR RUNOUT
				↻	TOTAL RUNOUT

CHG TO: 72 124 149	PART NO.		
THIRD ANGLE PROJECTION	SIZE 4.75-6.50	STROKE	
DRAWN C.W. GOWDY	DATE 28MAR12	TYPE MOS	
CHECKED T. BLAZEJEWSKI	DATE 20JUL12	NAME OF PART	
APPROVED T. BLAZEJEWSKI	DATE 20JUL12	CYLINDER-OUTLINE	
3D PART	SCALE NONE	DWG NO. HB100650	REV. 02
	WT. SEE TABLE	SHEET 1 OF 1	