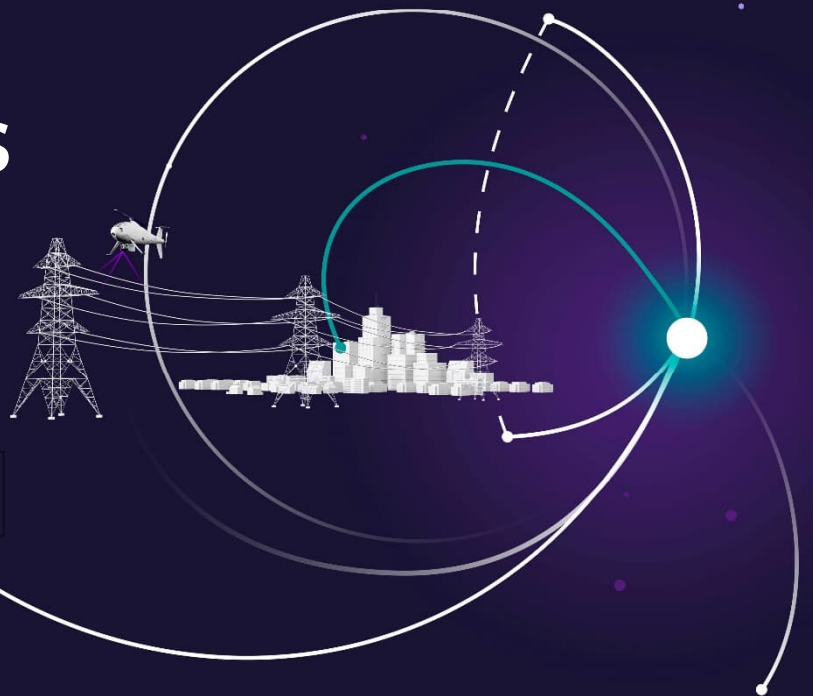


Global Parts Services

for High-Voltage AIS

- Circuit Breakers
 - Live Tank
 - Dead Tank
 - Dead Tank Compact (DTC)



[siemens-energy.com/t-service](https://www.siemens-energy.com/t-service)

Introduction

Operational availability of high-voltage switchgears is key to a reliable supply of electrical energy. This is vital to our modern societies and their industrial sector.

The revenue streams of our customers are highly dependent on their uninterrupted energy supply capabilities. Any outage time caused by unexpected failures needs to be minimized to keep outage costs as well as reputational damage to an absolute minimum.

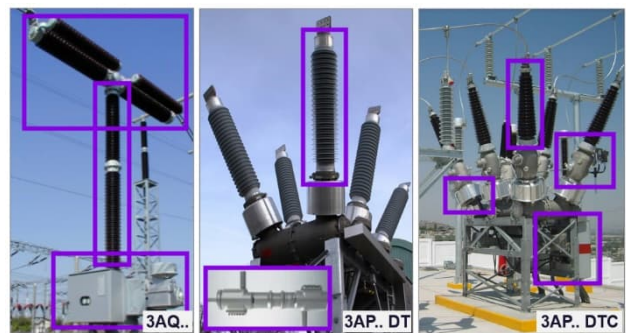
Our Global Parts Service ensures the supply of service parts for Siemens Energy AIS live tank, dead tank and dead tank compact Circuit Breakers which are required during their asset lifetime.

The service includes the provision of parts for:

- Planned maintenance measures i.e., 'maintenance parts' as well as parts for
- Unplanned maintenance measures i.e., 'repair parts' or 'operational' and 'strategic' spares

The available spare types range from:

- Major functional components, to
- Single units or parts.



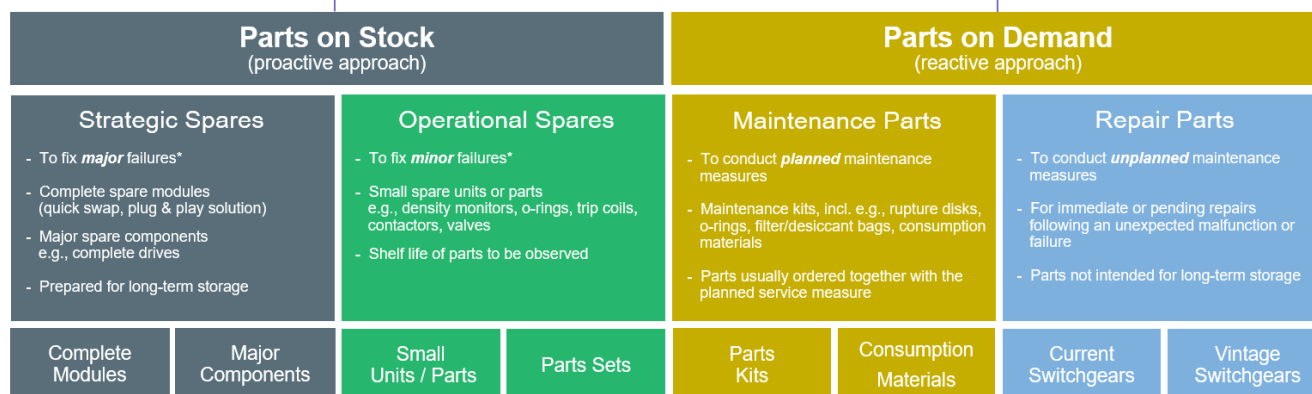
Major functional spare components e.g., hydraulic or spring drive mechanisms, breaker heads, pole columns, CTs and VTs



Single spare units or parts e.g., density monitors, pressure switches, valves, counters and operating coils

All spares are supplied in high quality and with Siemens Energy material warranty. For all maintenance or repair work we offer the fastest possible solution with our certified service experts.

Parts Management Concept



* According to IEC 62271-1

Note: The descriptive structure is based on customer view.

Parts Management Concept

The parts management concept serves as guideline for the classification, description, and handling of parts, relevant during the service life of switchgears. Customers ideally benefit when all part categories are utilized.

- Parts on Stock - Proactive approach
 - Carefully selected 'operational' and 'strategic' spare parts kept in stock as a precautionary measure for anticipated, unplanned service events. These parts ensure immediate response to a malfunction or failure and help to maintain the highest level of operational readiness. They are an essential element for customers who want to keep downtime to a minimum.
- Parts on Demand - Reactive approach
 - Parts usually required and procured after a concrete trigger indicates the need for them. This may either be a planned maintenance with 'maintenance parts' e.g., after reaching a certain operation time interval of the Circuit Breaker, or an unexpected faulty condition requiring 'repair parts' for rectification.

Strategic Spares

These spares which are kept in stock as a precaution, are utilized to fix major failures (acc. IEC 62271-1 definition) causing a prolonged interruption of power service of the whole switchgear bay. They are primarily major functional components which facilitate a quick swap of the faulty component to restore operational readiness as quickly as possible.

Operational Spares

These spares which are kept in stock as a precaution, are utilized to fix minor failures (acc. IEC 62271-1 definition), typically used for non-critical failure repairs, mostly with single spare units or parts sets.

Maintenance Parts

These parts also including consumption material are utilized during planned service measures, acc. to OEM recommendations. The procurement of maintenance parts is typically coordinated together with the planned service measure.

Repair Parts

These parts are used for imminent or planned repairs e.g., following an unexpected malfunction or failure. The definition of required parts and their procurement is carried out in direct context of the service measure.

Our Offer

To protect our customers against operational and financial risks resulting from potential malfunctions or failures of their high-voltage switchgears, Siemens Energy's Global Parts Service stands ready to provide just the right parts quickly and wherever needed. Our services include:

- Reliable availability of (spare) parts for Siemens Energy AIS required during their asset lifetime
- Worldwide supply of parts ensured by our global logistics network
- Short response times to enquiries ensured by our 24/7 Customer Support Center
- Individual spares solutions supported by our spares consulting services:
 - Smart Strategic Spares Solution ('Smart Spares') for a tailored, cost-optimized selection of 'strategic' spares
 - Spares Inventory Solution ('SparesVentry') to make the most out of existing spares already in stock (condition assessments, interchangeability checks, value preservation).

In addition, other available asset services such as field & maintenance services, repair & emergency, or modernization & retrofit play perfectly together with the Global Parts Service and help to secure the reliable operation of our customer's switchgears.

► Make use of it!

Published by © 2022 Siemens Energy
Transmission Services
Humboldtstraße 64
90459 Nuremberg, Germany

Customer Support Center
Phone: +49 911 6505 6505
E-Mail: support@siemens-energy.com

For more information, please visit our website:
[siemens-energy.com/t-service](https://www.siemens-energy.com/t-service)

"Subject to changes and errors. The information given in this document only contains general descriptions and/or performance features which may not always specifically reflect those described, or which may undergo modification in the course of further development of the products. The requested performance features are binding only when they are expressly agreed upon in the concluded contract."

Siemens Energy is a trademark licensed by Siemens AG