

Dresser-Rand PHE

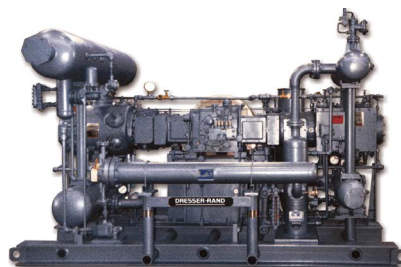
Reciprocating Process Compressor

The Dresser-Rand PHE reciprocating process compressor provides an economical solution where full-time, medium volume service is a requirement. Its proven performance, balanced design, and wide range of cylinder selections make the PHE an excellent choice for a variety of applications.

Versatility and Performance

The PHE is a horizontally opposed, two-throw, reciprocating compressor designed for long-term, process gas service. Designed to API-618 specifications. It can handle a variety of drivers with either direct or V-belt connections and can be fitted with either lubricated or non-lubricated cylinders ranging from 1.625 to 19 inches (41 to 483 mm) in bore diameter.

Like all Dresser-Rand business reciprocating process compressors, the PHE is engineered to our high standards, ensuring long-lasting reliability. It offers a versatile alternative to larger, more costly compressors, providing an economic solution for requirements that demand full-time performance in lower volume service.



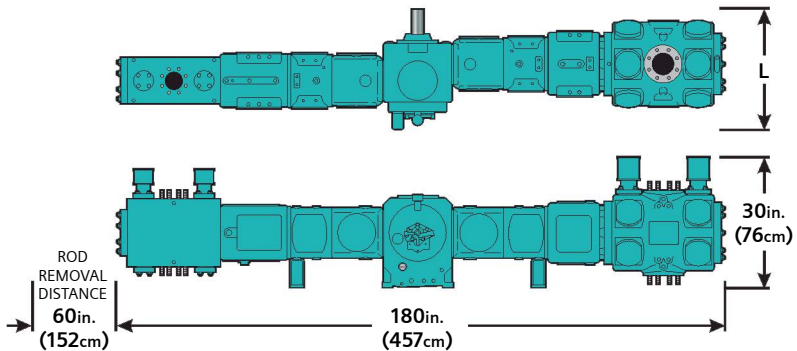
Designed and Built With Precision

With its fine-grain, cast iron frame, the PHE is engineered to provide maximum support for the running gear and related components. The rigid frame design and balanced crankshaft minimize vibration and provide for low moments and minimal foundation requirements. Forged from high tensile strength alloy steel, the crankshaft is fully stress relieved and heat-treated. The bearing journals and crankpin are precision ground and polished to exacting tolerances.

Rugged, precision-machined aluminum main and crankpin bearings are generously sized for best run-in and long-lasting service. All bearings are force-lubricated per API-618 specifications. Connecting rods are die-forged steel with rifle-drilled passages for positive lubrication of the crosshead pin and bushing. A shoe-less aluminum crosshead is standard and requires no adjustment.

Specifications

Maximum HP	240 (179kW)
Standard strokes	7 inch (178 mm)
Number of throws	2
Cylinder bore range	1.625 to 19.0 inches (41 to 483 mm)



Outstanding Cylinder Design and Selection

With experience in a wide variety of services, our cylinders provide outstanding service and reliability. Our engineering expertise ensures that each cylinder provides maximum performance and reliability with minimum maintenance cost. Cylinder materials include cast iron, nodular iron, cast steel, fabricated carbon or stainless steel, and forged steel. Most cylinders are available for either lubricated or non-lubricated service.

Dimensions

For API-type distance pieces add 18 inches (457 mm) to the width dimension and 9 inches (229 mm) to the rod removal distance.

Published by
Siemens Energy Global GmbH & Co. KG
Industrial Applications
Freyeslebenstraße 1
91058 Erlangen
Germany

Published by
Siemens Energy, Inc.
Industrial Applications
15375 Memorial Drive, Suite 700
Houston, TX 77079
USA

For more information, please contact
Phone: +1 832-679-8500

Article No. GPOG-B10009-00-7600
© Siemens Energy, 2021

Siemens Energy is a registered trademark licensed by Siemens AG.

Subject to changes and errors. The information given in this document only contains general descriptions and/or performance features which may not always specifically reflect those described, or which may undergo modification in the course of further development of the products. The requested performance features are binding only when they are expressly agreed upon in the concluded contract. All product designations may be trademarks or product names of Siemens Energy Global GmbH & Co. KG or other companies whose use by third parties for their own purposes could violate the rights of the owners.