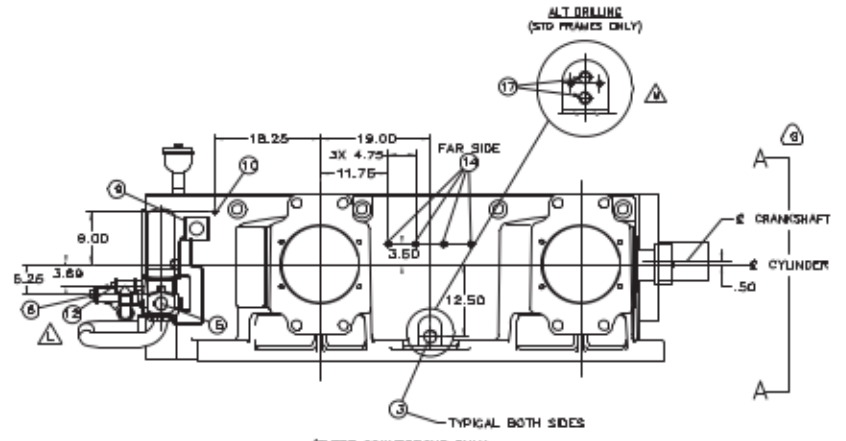
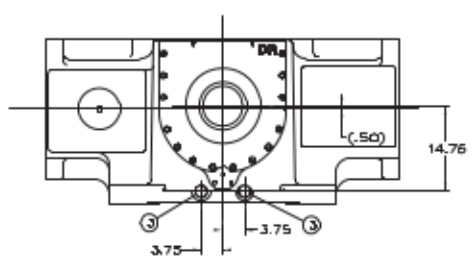


CALL NO.	REVISION	DATE	APPROVE
A	ASSEMBLY DRAWING	7/8/76	W.C. WILSON
B	2" X 2" HOLES TO BE DRILLED IN FRAME	8/23/76	W.C. WILSON
C	ADD 14.5 INCHES TO CRANKSHAFT	10/14/76	W.C. WILSON
D	ADD 1.5 INCHES TO CRANKSHAFT	10/14/76	W.C. WILSON
E	ADD 1.5 INCHES TO CRANKSHAFT	10/14/76	W.C. WILSON
F	ADD 0.5 INCHES TO CRANKSHAFT	10/14/76	W.C. WILSON
G	ADD 0.5 INCHES TO CRANKSHAFT	10/14/76	W.C. WILSON
H	ADD 1.5 INCHES TO CRANKSHAFT	10/14/76	W.C. WILSON
J	ADD 1.5 INCHES TO CRANKSHAFT	10/14/76	W.C. WILSON
K	ADD 1.5 INCHES TO CRANKSHAFT	10/14/76	W.C. WILSON
L	ADD 1.5 INCHES TO CRANKSHAFT	10/14/76	W.C. WILSON
M	ADD 1.5 INCHES TO CRANKSHAFT	10/14/76	W.C. WILSON



- ① HAND OIL PUMP (IF REQUIRED)
- ② FRAME OIL LEVEL INDICATOR
- ③ 2.000 NPT FRAME OIL DRAIN (PLUGGED)
- ④ 2.000 NPT FRAME OIL HEATER (PLUGGED) FRAME OIL INLET FROM COOLER OR ELECTRIC DRIVEN PRE-LUBE PUMP; 2" NPT (D-R CO. TO FURNISH)
- ⑤
- ⑥ 2.00" NPT FRAME OIL OUTLET TO COOLER. (PLUGGED)
- ⑦ .500 NPT-2 HOLES (PLUGGED)
- ⑧ LEVELING SCREWS .875-9 UNC-2B
- ⑨ DIFFERENTIAL PRESSURE INDICATOR (D-R CO. TO FURNISH)
- ⑩ OIL LEVEL CONTROL VENT .38 NPT (PLUGGED)
- ⑪ RELIEF VALVE - FACTORY SET AT 60 PSIG
- ⑫ 2.00" NPT EXTERNAL OIL INLET (PLUGGED) (ONLY USED ON DRY SUMP APPLICATIONS)
- ⑬ 1.500-8UNC-2B 2.25 FULL THD. LIFTING LUG (1 PER THROW)
- ⑭ .500 NPT RTD - 4 HOLES (IF REQUIRED)
- ⑮ .750 NPT AUX. CONNECTION - PLUGGED
- ⑯ BICERA DOOR - IF REQUIRED BY CLIENT
- ⑰ .750 NPT OIL LEVEL CONTROLLER
- ⑱ 1.50 NPT OIL FILLER

TOTAL WT: APPROX. 10,600 LBS

DESIGNED BY	DATE	DRWN BY	DATE	SCALE
R. KELLEY	7/8/76	W.C. WILSON	7/8/76	1:1

NAME OF PART: OUTLINE - FRAME (4 THROW)

APPROVED BY: W.C. WILSON

DRAWING NO.: AA-20-400B

SCALE: 1:1

WT: 10,600 LBS

SHEET 1 OF 1