

NOTICE TO SUPPLIERS

Subject: **New requirements labeling and paperwork for Serialized P/N**

Originator: Jay Jacobs
 Job Title: Senior Manager, Supply Chain Operations
 Product Line: Aero Derivative Gas Turbine (AGT)
 Siemens Business Unit: Siemens Canada Limited

NTS Number: SC023
 Issue: 001
 Date: 11th June 2019

For the attention of the Managing Director

Dear Sir or Madam

In an effort to optimize the inbound receiving process of all goods received from our supply chain partners we have reviewed our current operating procedures and have identified a couple of initiatives that will benefit Suppliers and Siemens.

Many of you already affix a label to the outside of your packages which indicates basic order information like Order Number and Part Number. We would like the serial number of the unit in the package included in the information on the label. This is requested when there is only 1 unit in the package. If there is more than 1 unit in the package, we request that a sheet be placed in the package with the material showing the individual serial numbers of the material in Bar Code format. This will enable Siemens to speed up the receiving process and process your payments without related issues. The following guidelines should be applied going forward.

Please note the Packaging and labeling Siemens guidelines is being updated to reflect these requirements for serialization.

General labelling requirements for Serialized parts

The supplier shall:

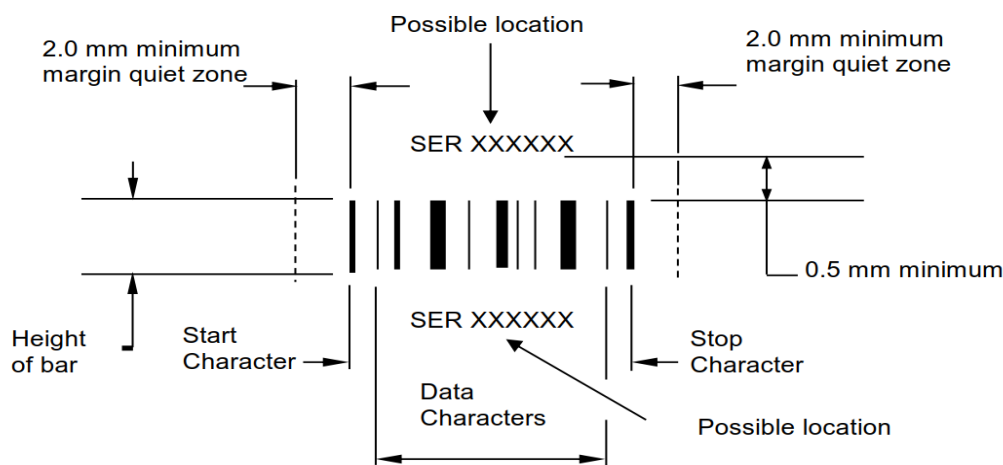
Ensure that products are labelled to a standard that will provide adequate identification and traceability of the product.

D Bar code standards for all labels

The supplier shall:

Ensure that bar-code symbology to code 128 (preferred) to ISO/ IEC 15417 symbology specification, or code 39 to ISO / IEC 16388 is used and is legible / readable.

- Ensure that all human-readable identification (text) associated with the bar-code markings has a height equal to or greater than 2.0 mm and can be read clearly without magnification
- Ensure that the human readable identification is positioned anywhere above or below the bar-code providing that the "quiet zone" is not invalidated
- Ensure that the human readable interpretation is contained in a one-line string of characters
- Ensure that the height of bar is 5mm minimum, but where space is limited, 3 mm minimum is acceptable.



Text Element Identifiers (TEI) for all Labels

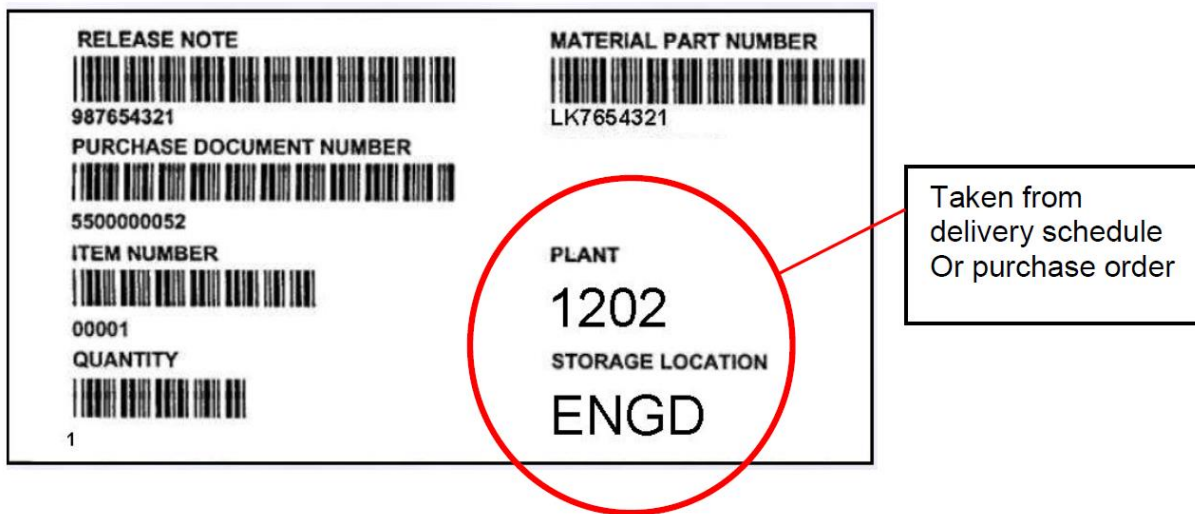
The supplier shall:

- Ensure that the text element identifiers (see below for acceptable TEIs) are used to identify the text being read. The TEI shall consist of the characters followed by a space. The bar code, when read, must display exactly the human readable text - including the 'TEI'.

Packaging label information

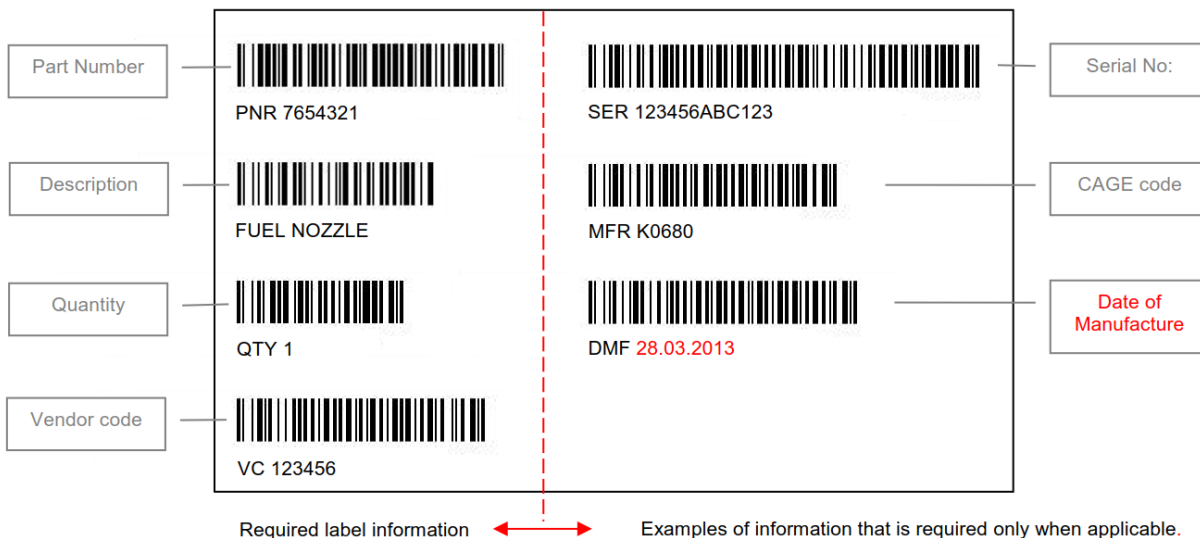
The supplier shall:

- Ensure that the packaging labels are attached to all layers of packaging.
- Mandatory information to provide on the label : Release note number, Purchase order Number, Part Number, Qty, PO item number, Plant and Serial number.



- Serial number bar code should be provided for every part within the package.

Packaging label format (example)



NOTE: See below for packaging label Information that shall be included on the label as a basic (minimum) requirement and / or when applicable.

Packaging label requirements

The supplier shall:

SIEMENS

- Include the following packaging label Information as a basic (minimum) requirement and / or when applicable.
- Include a sheet in the package showing the individual serial numbers in Bar Code format when the quantity is greater than 1 piece

	Required	When Applicable	
Text + Barcode	<p>PNR - Part Number – Part Number is the identity for the subject part, assembly or material item and is specified on the Siemens purchase order. Data format is PNR [space], followed by the part number + barcode.</p>	√	
	<p>Description - Data format is the description of the product i.e. key words taken from the component definition + barcode (barcode is optional).</p>	√	
	<p>QTY – Quantity refers to the total quantity of items (e.g. 1, 5, 10, 100) contained within the package. Data format is QTY [space] followed by the total number of items + barcode. The unit of measure e.g. sets, rolls, kg/lbs, meters, feet etc) are only required when applicable.</p>	√	
	<p>VC - Vendor Code - Non-serialised parts only - Data format is VC [space] followed by the supplier vendor code + barcode. (Allocated by Siemens).</p>	√	
	<p>SER - Serial Number – The Serial number is required on the label if the part is serialised, as instructed by the engineering component definition e.g. drawing / Siemens technical specification, Data format is SER [space] followed by the unique serial number and barcode.</p>		√
	<p>MFR - Manufacturer – When identified on the engineering component definition as 'CAGE' or 'MFR', the five characters Commercial and government entity (CAGE) code is required. This identifies the organization controlling the design and part number assignment of the product. Data format is MFR [space] followed by the five digit manufacturers code + barcode (refer to relevant Engineering standards shown for CAGE code guidance and applicability).</p>		√
<p>DMF - Date of Manufacture – The Date of Manufacture is only required when identified on the engineering component definition, purchase order instructs the requirement, or the item has a shelf-life. This must be the date the life-limiting process was completed (e.g., etch date / cure date / manufacture date). Data format is DMF [space], followed by day, month and year separated by a period (i.e., DD.MM.YYYY) + barcode. Cure dated parts must state the material group (A, B, X etc.)</p>		√	

With kind regards,

Signature